

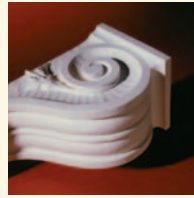
## TABLE OF CONTENTS

For quick and easy reference, this comprehensive catalog has been subdivided into major product categories. If you don't see a product you normally purchase our Customer Service department is here to help you find what you need.



### CUSTOMER SERVICE, FEATURES AND DELIVERY

Page 3 - 5



### DECORATIVE MILLWORK

Pages 1 DM - 53 DM



### ADHESIVE INFORMATION

Page 6 - 7



### BALUSTRADES AND COLUMNS

Pages 1 BL - 46 BL

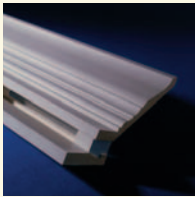


### LOUVERS

Pages 1 LV - 26 LV

### INSTALLATION INSTRUCTIONS TABLE OF CONTENTS

Page 8

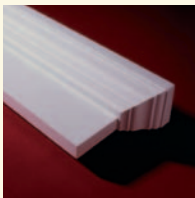


### E-VENTS™

Pages 1 EV - 9 EV

### GENERAL INFORMATION AND WARRANTY

Page 9



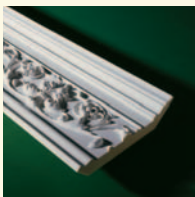
### WINDOW AND DOOR TRIM

Pages 1 WD - 78 WD



### GENERAL INSTALLATION GUIDELINES

Pages 10 - 44



### MOULDINGS

Pages 1 MD - 66 MD

### GLOSSARY

Pages 45 - 48

### INDEX AND CROSS REFERENCE

Pages 49 - 81

**Blackstock Lumber Co., Inc.**  
 1039 Elliott Avenue West • Seattle, WA 98119  
 Phone (206) 284-1313 • Fax (206) 281-0062  
[www.blackstocklumber.com](http://www.blackstocklumber.com)

## WE ARE HERE FOR YOU.

For 35 years, Fypon has been manufacturing top quality urethane millwork and mouldings. We offer the finest products in the industry – beautiful, tough, durable and easy-to-install products designed to meet the high standards of design and building professionals. Each piece we make starts from a precision-crafted master. Skilled craftsmen use these masters to reproduce exacting duplicates, with crisp details and outstanding finishes. This catalog provides a thorough overview of thousands of Fypon products, our ordering process and much more. We hope that you find it useful. As you work with it, please call us if you have any questions or need assistance. Our local and toll-free 800 numbers are listed on every single page in this catalog. We are here to help from 8 a.m. to 5 p.m. Eastern Time, Monday through Friday. For even more current, up-to-date information, visit us on the web at [www.fypon.com](http://www.fypon.com).



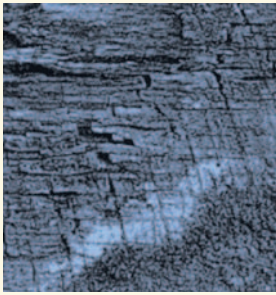
## FEEL THE NEED FOR SPEED?

We know that you need products quickly, so we inventory most products and ship them as standard orders within five (5) working days. Special orders and custom designs may require additional time. Please use these guidelines for your orders. If you have any questions, please give us a call. We're always glad to help you in any way that we can.

1. **Standard millwork** orders ship from our facility in Ohio **within five (5) working days of order entry.**
2. Balustrade systems and E-Vent™ systems may require additional ship time, depending upon the style of products and size of your order.
3. **Fabricated Products** (modifying catalog items into special sizes or designs) **ship within five (5) working days from order entry.**
4. For **custom designs** involving the creation and development of new masters and molds, we will work with you to determine exact production specifications as well as lead times on an individual project basis.
5. For unusually large orders, your Customer Service Representative will work with you to determine a ship date.
6. In back order situations, we may ship partial order quantities with the balance to follow. In such cases, we will pay regular freight charges in the continental United States on shipment of the back ordered quantity.

These guidelines are intended to cover most, but not all, order situations. For any orders that ship later than our standard ship time – five (5) working days after order entry – we will inform you and work with you to identify a ship date.

## THE BEAUTY OF URETHANE.



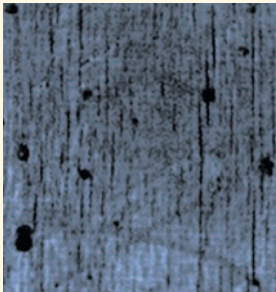
### MOISTURE RESISTANT:

Urethane millwork's closed cell structure prevents water penetration and absorption.



### SPLINTER RESISTANT:

Urethane millwork does not splinter like wood. If surface blemishes occur during installation, they can be easily repaired with ordinary plastic wood filler.



### INSECT RESISTANT:

Urethane millwork provides a practical alternative if you want the look of real wood detailing for your projects, but live in an area that is prone to insect infestation.

## Urethane Millwork/Wood Considerations

CONSIDERATION	URETHANE MILLWORK	WOOD
<b>Quality/Composition</b>	consistent quality; no waste; consistent finish	quality varies; knots and gouges result in waste; blotching, disappearing grain and discoloration can occur
<b>Versatility</b>	all products suitable for interior or exterior application	different grade of material and finish required for outdoor application
<b>Durability</b>	resists warping or splitting; resists weather damage and insect infestation	can warp; susceptible to splitting; susceptible to rotting and insect damage
<b>Labor Savings</b>	requires no sanding, priming or sealing; mouldings easy to install	requires sanding, priming and sealing; intricate mouldings require multiple application process incurring high labor costs
<b>Value</b>	reasonable, stable price; long lasting good looks with low maintenance; increases home/building resale value	market price fluctuates; requires periodic maintenance; may need replacement/refinishing as damage occurs

## A MASTERPIECE IS BORN.

For every product we make, a detailed, finely crafted original master is used to create a production mold. At Fypon, we constantly maintain our masters and our molds, replacing them if they show even the slightest signs of wear and tear.

The mold is finished with a barrier coat of UV resistant primer and filled with top quality urethane. The urethane expands under pressure, creating an exact duplicate of the original master. This new piece is removed from the mold and checked for quality before it is sent for final finishing.

Having passed a rigorous quality examination, the urethane piece is finished with a UV resistant white primer. Once finished, the piece is ready for packaging and delivery.





## PL Premium Adhesive

Part Number	Description
ADH1	10.6 oz. Cartridge (1)
ADH6	10.6 oz. Cartridges (6)
ADH12	10.6 oz. Cartridges (12)



## Fypon Exterior White Paint

Part Number	Description
EWP00501	0.5 oz. Bottle (1)
EWP00512	0.5 oz. Bottles (12)
EWP121	12 oz. Aerosol Can (1)



## Fypon Filler Putty

Part Number	Description
FRP04001	4.5 oz. tube (1)
FRP04012	4.5 oz. tubes (12)

### WHITE COLOR MATCH AVAILABLE AT SHERWIN-WILLIAMS®

To better service our customers nationwide, we have worked with Sherwin-Williams to formulate a color and sheen match for our factory-applied finish. You can take this formulation to your local Sherwin-Williams dealer for a perfect match.

**Formulation:**

Superior Exterior  
Satin Latex

**Paint Gallon Base:**

A89W51  
LI – 1/64 Y3 – 1/128  
WI – 6 oz. R1 – 1/64  
NI – 1/128

## PL Premium Adhesive Comparison

Why it's important to use the correct adhesive.

ADHESIVE BASE	URETHANE BASE PL PREMIUM ADHESIVE	SOLVENT BASE CONSTRUCTION ADHESIVE	WATER BASE CONSTRUCTION ADHESIVE
Exceeds VOC Compliance Regulations	YES	NO	YES
Environmentally safest grade	A	F	D+
Exceeds all treated, subfloor specs. & Building Codes	YES	NO	NO
Compatible with all building materials	YES	NO	NO
Special storage	NO	NO	YES
Workability below freezing	EXCELLENT	FAIR-POOR	NOT POSSIBLE
Permanent overnight bond	YES	NO	NO
Flammability	250° FLASHPOINT	0° EXTREMELY FLAMMABLE; VAPORS MAY CAUSE FLASH FIRES	110°
High heat resistance (cured)	400°	190° MAXIMUM	180° MAXIMUM
Vapor toxicity	NONE	USE ONLY WITH CROSS VENTILATION	USE ONLY WITH CROSS VENTILATION
Repositioning up to one hour without losing strength	YES	NO	NO
Shrinkage	NIL	35-40%	35-40%
Workable yield of adhesive per 10.6 oz. tube to pass Building Codes	32 FT.	14 FT.	14 FT.
Chemical resistance	EXCELLENT	FAIR	FAIR

SHEAR STRENGTH*	24 HRS/7 DAYS	24 HRS/7 DAYS	24 HRS/7 DAYS
Polyurethane foam to brick	37 LBS. / 37 LBS.	12 LBS. / 37 LBS.	18 LBS. / 21 LBS.
Polyurethane foam to cinder block	37 LBS. / 37 LBS.	12 LBS. / 37 LBS.	18 LBS. / 21 LBS.
Polyurethane foam to concrete	37 LBS. / 37 LBS.	12 LBS. / 37 LBS.	18 LBS. / 21 LBS.
Polyurethane foam to Douglas fir	37 LBS. / 37 LBS.	12 LBS. / 37 LBS.	18 LBS. / 21 LBS.
Polyurethane foam to metal	37 LBS. / 37 LBS.	12 LBS. / 37 LBS.	18 LBS. / 21 LBS.
Polyurethane foam to Oriented Strandboard (OSB)	37 LBS. / 37 LBS.	12 LBS. / 37 LBS.	18 LBS. / 21 LBS.
Polyurethane foam to stucco	37 LBS. / 37 LBS.	12 LBS. / 37 LBS.	18 LBS. / 21 LBS.
Polyurethane foam to treated lumber	37 LBS. / 37 LBS.	12 LBS. / 37 LBS.	18 LBS. / 21 LBS.

\*Per square inch. NOTE: Average data is from 10 samples.  
Exceeds glued subfloor and construction Codes AFG-01, FHA Bulletin UM-60, ASTM C-557, ASTM 3498.

**Blackstock Lumber Co., Inc.**  
 1039 Elliott Avenue West • Seattle, WA 98119  
 Phone (206) 284-1313 • Fax (206) 281-0062  
[www.blackstocklumber.com](http://www.blackstocklumber.com)